

## Kensington® Flat Panel Cubicle Hanger Plus

Save desktop space by hanging flat panel display from cubicle

K60059

### Product Description

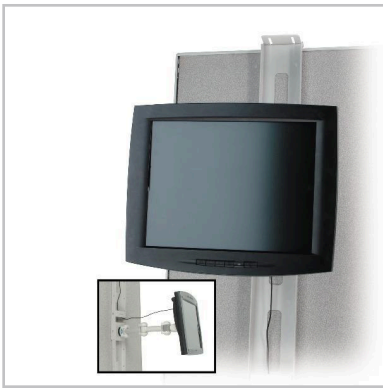
Save desktop space by hanging flat panel display from cubicle wall.

### Features

- Clear desktop space by mounting monitor to cubicle wall
- Track slips over cubicle wall to support flat panel monitor at optimal viewing height
- Arm extends to adjust display distance for reduced shoulder, neck and eye strain
- Adjusts display distance for greater comfort
- Positions display for comfort and reduced glare
- Tilt adjustment reduces glare and allows positioning at multiple viewing angles for improved comfort
- Works with range of cubicles; ideal for spaces with multiple users
- Monitor track hangs over cubicle wall
- Height is adjustable between eight different settings. Also includes distance adjustment and four-way tilt.

### Specifications

- **Custom / Stock** Stock
- **Durable / Consumable** Durable
- **Private Label** NO



### Each information

Depth	21.1"
Width	5.8"
Height	7.9"
Gross weight	13.35lbs
UPC#	085896600596
Unit quantity	1

### Case information

Depth	21.8"
Width	18.3"
Height	9"
Gross weight	42.90lbs
UPC#	50085896600591
Unit quantity	3

### Shipping Information

Country of origin	TW
Minimum Order Quantity	3
Warranty Period	24
Lowest possible unit	Case
Sunset date	6/14/2018

### General information

Color	LT GRAY
Moore #	KMW60059
Layer/Pallet	5
Cases/Layer	4